


Champagne

cham-pagne: with roots in French royalty, and being notorious for celebrations and extravagance, this classic beige-grey tint contains hints of reflective gold.

The Champagne stands by its namesake and epitomises a lifestyle of luxury and opulence. This double storey design turns a mansion into a home with formal living and dining areas, an oversized scullery, a home office and a large alfresco. The master suite is a key feature with his-and-hers walk-in-robos, additional room for a seating area and a huge ensuite with free-standing bath.

PERFECT FOR

-  **Large block**
-  **Knock-Down, Rebuild**
-  **Big families**
-  **Entertainers**
-  **Growing families**
-  **Home theatre option**
-  **Home office option**
-  **Scullery included**



Facades



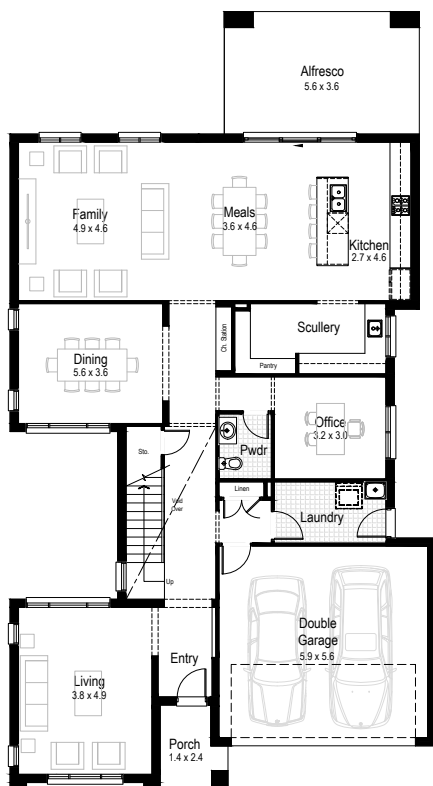
14.65 m

MINIMUM LOT WIDTH

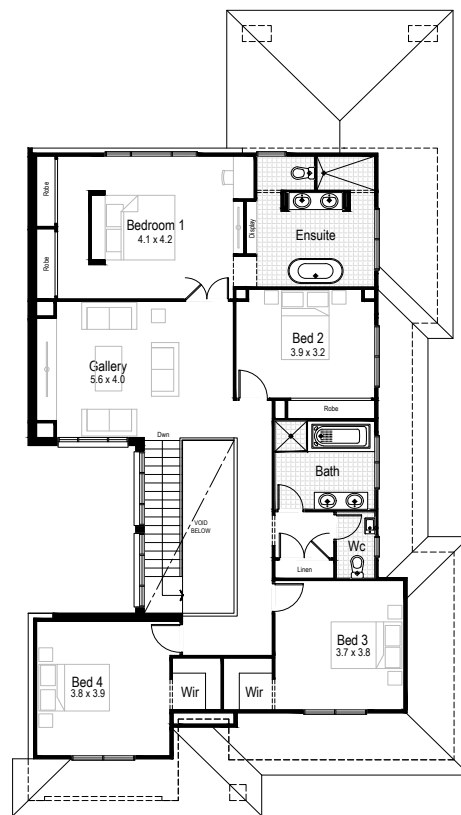
STCC (Subject to Council Conditions)

Champagne 41

4 2.5 2



Ground floor



First floor



Ground floor
living area
160.12 m²



First floor
living area
159.05 m²



Garage
37.15 m²



Alfresco
20.16 m²



Porch
4.07 m²



Overall width
12.23 m



Overall length
22.79 m



Total area
380.55 m²

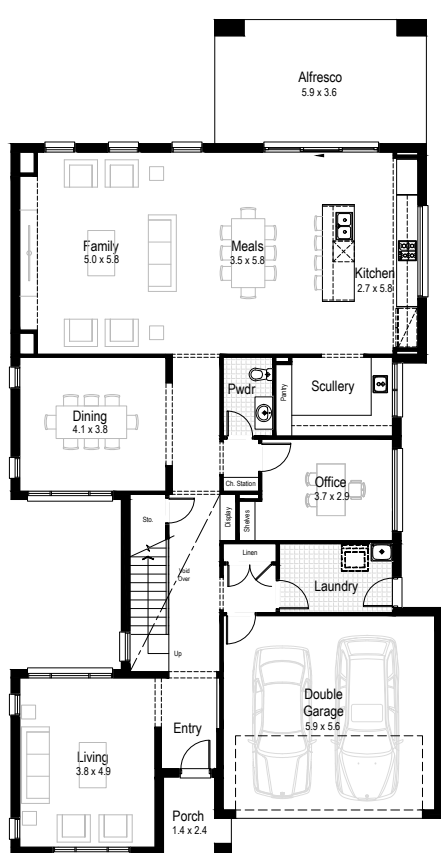
14.65 m

MINIMUM LOT WIDTH

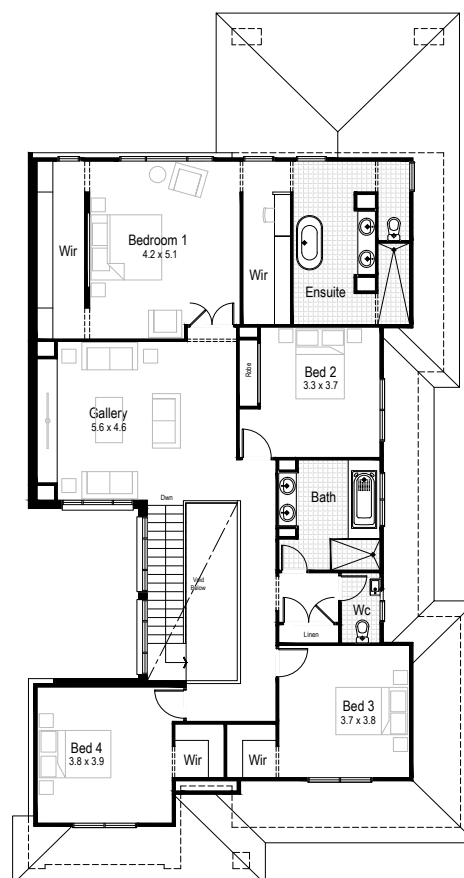
STCC (Subject to Council Conditions)

Champagne 45

4 2.5 2



Ground floor



First floor



Ground floor
living area
178.04 m²



First floor
living area
178.84 m²



Garage
37.15 m²



Alfresco
21.56 m²



Porch
4.04 m²



Overall width
12.23 m



Overall length
24.35 m



Total area
419.63 m²

14.65 m

MINIMUM LOT WIDTH

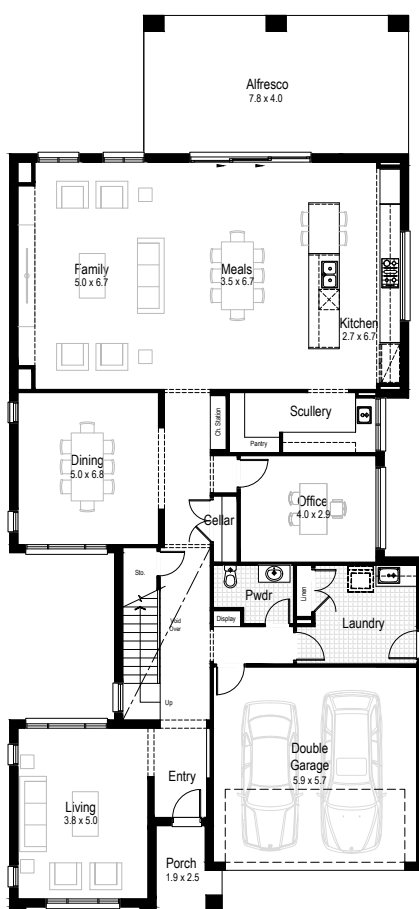
STCC (Subject to Council Conditions)

Champagne 50

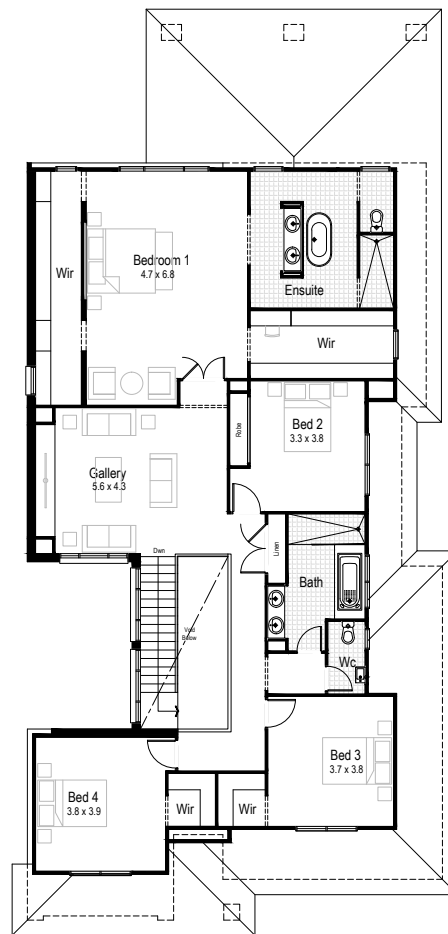
4

2.5

2



Ground floor



First floor



Ground floor
living area
199.09 m²



First floor
living area
195.09 m²



Garage
37.63 m²



Alfresco
31.82 m²



Porch
4.25 m²



Overall width
12.23 m



Overall length
26.39 m



Total area
467.88 m²

14.65 m

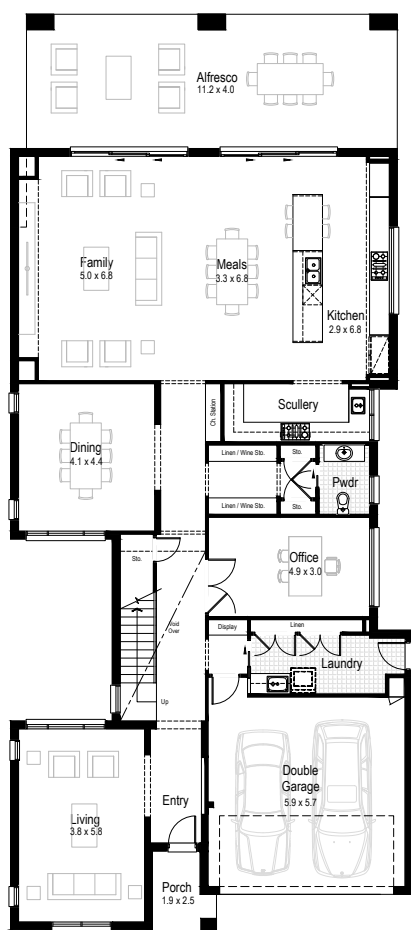
MINIMUM LOT WIDTH

STCC (Subject to Council Conditions)

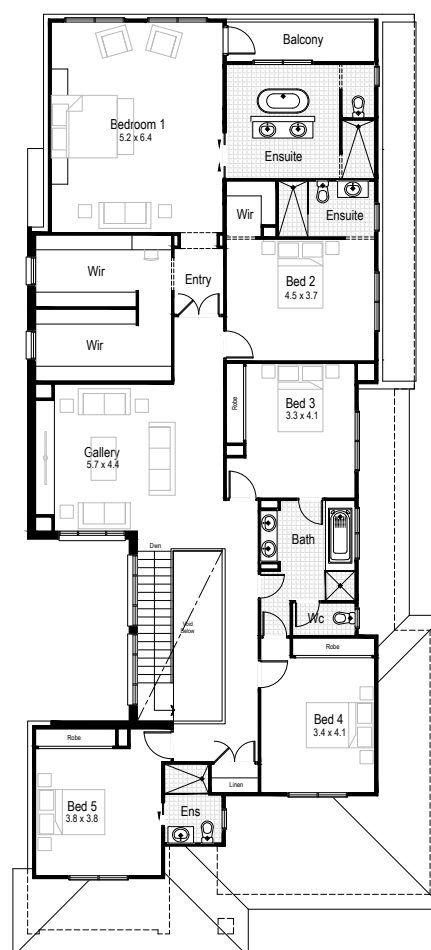
Champagne 58

5 4.5 2

NEW
DESIGN



Ground floor



First floor



Ground floor
living area
211.90 m²



First floor
living area
231.09 m²



Garage
38.87 m²



Alfresco
45.99 m²



Porch
4.25 m²



Overall width
12.23 m



Overall length
27.95 m



Total area
538.05 m²

COMPLETE YOUR DREAM HOME

SELECT AN INCLUSIONS PACKAGE
TO SUIT YOUR STYLE AND BUDGET



WE CALL THEM NECESSITIES. **NOT UPGRADES**

When our team created our range of inclusions packages, we decided to select items that you will need at every stage of your life. That's why our standard inclusions packages include:



Air Conditioning



Automatic Garage Door



Tiled Outdoor Alfresco



Site Costs for Standard Lot*



**Carpet and Tiles
Throughout**



**Westinghouse Stainless
Steel Appliances**



**Built-in Robes with
Mirrored Sliding Doors**



PLUS SO MUCH MORE



Pick up a brochure or visit hudsonhomes.com.au

*Site costs for a standard, cleared block with up to 1m fall across the building platform and up to M class slab



hudsonhomes.com.au

1300 246 700

Let's be friends

