









# Rose

**rose:** taking inspiration from one of the most desired flowers in modern history, the rose is iconic for its soft pink hue that is gentle yet rich in colour.

The Rose has been specifically designed for the modern family, with multiple living areas for both work and play. The massive open plan design, leading to the alfresco at rear, provides a fantastic entertaining space, featuring a generous scullery; while the bedrooms are conveniently confined to upstairs with an impressive master suite.

## PERFECT FOR

-  Large block
-  Knock-Down, Rebuild
-  Big families
-  Entertainers
-  Growing families
-  Home theatre option
-  Home office option
-  Scullery included



# Facades



Allure



**PREMIUM**

Aspen



Breeze



**PREMIUM**

Centro



Chateaux



Classic



Contemporary



**PREMIUM**

Statesman



Marina



**PREMIUM**

Metro



Novare



**PREMIUM**

Royale



**PREMIUM**

Soho



**PREMIUM**

Tempo



**PREMIUM**

Vogue

## Other compatible facades

Ascot ★  
Ashton  
Cambridge  
Como ★

Delta ★  
Deluxe ★  
Flair ★  
Grande ★

Hamptons ★  
Monash  
Mondo

Nuvo ★  
Oxford  
Regal ★

Riviera ★  
Saville ★  
Windsor

17.53 m

MINIMUM LOT WIDTH

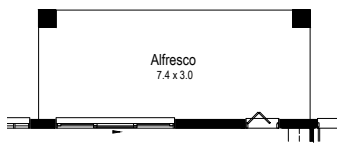
STCC (Subject to Council Conditions)

# Rose 34

4

2.5

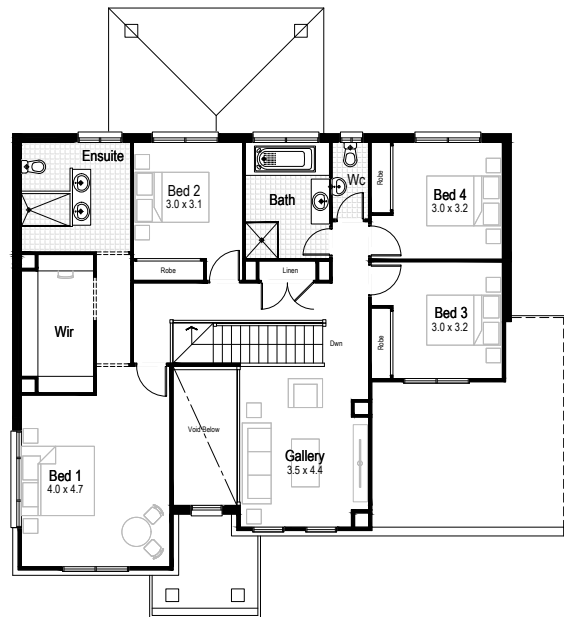
2



Option  
Alternate alfresco



Ground floor



First floor



Ground floor  
living area  
129.81 m<sup>2</sup>



First floor  
living area  
136.69 m<sup>2</sup>



Garage  
33.64 m<sup>2</sup>



Alfresco  
13.50 m<sup>2</sup>



Porch  
4.95 m<sup>2</sup>



Overall width  
15.11 m



Overall length  
15.95 m



Total area  
318.59 m<sup>2</sup>



19.81 m

MINIMUM LOT WIDTH

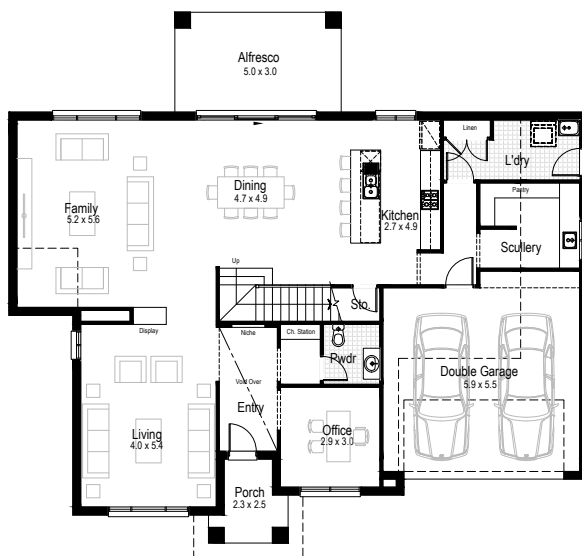
STCC (Subject to Council Conditions)

# Rose 38

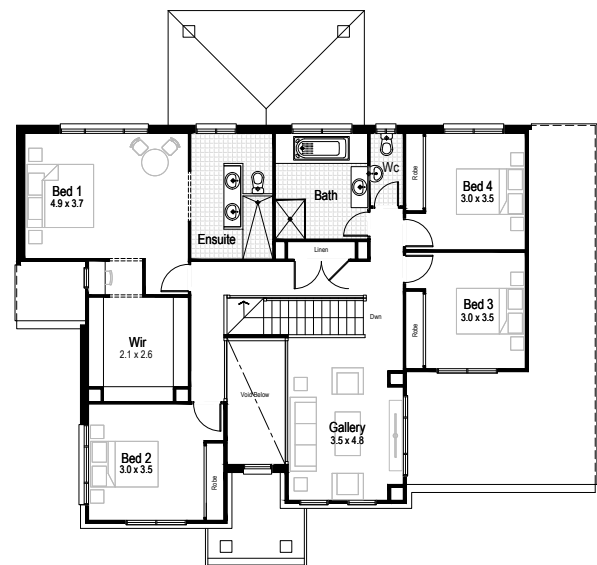
 4
  2.5
  2



Option  
Alternate alfresco



Ground floor



First floor



Ground floor  
living area  
151.32 m<sup>2</sup>



First floor  
living area  
146.89 m<sup>2</sup>



Garage  
36.98 m<sup>2</sup>



Alfresco  
15.00 m<sup>2</sup>



Porch  
4.72 m<sup>2</sup>



Overall width  
17.39 m



Overall length  
15.83 m



Total area  
354.10 m<sup>2</sup>

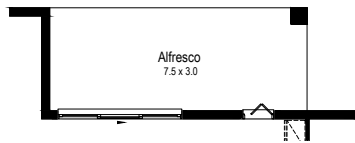
19.81 m

MINIMUM LOT WIDTH

STCC (Subject to Council Conditions)

# Rose 43

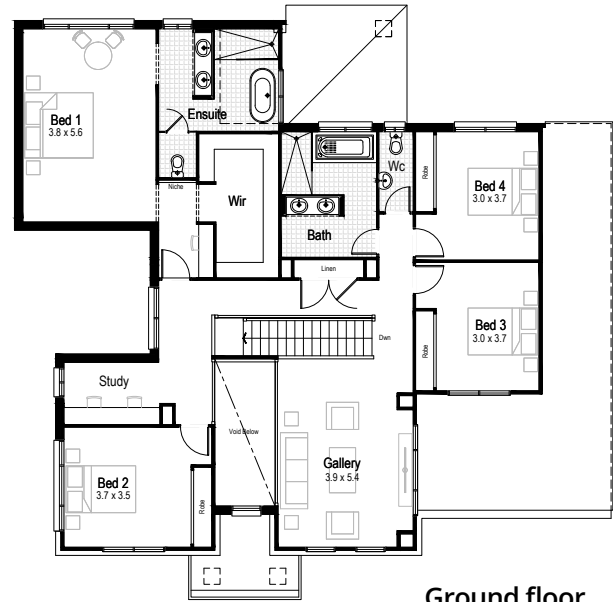
5 3 2



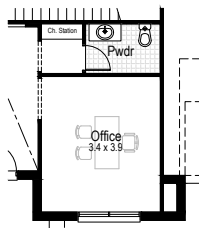
Option  
Alternate alfresco



First floor



Ground floor



Option  
Office in lieu of bedroom 5



Ground floor  
living area  
171.28 m<sup>2</sup>



First floor  
living area  
174.90 m<sup>2</sup>



Garage  
36.59 m<sup>2</sup>



Alfresco  
15.00 m<sup>2</sup>



Porch  
3.74 m<sup>2</sup>



Overall width  
17.39 m



Overall length  
16.31 m



Total area  
401.51 m<sup>2</sup>

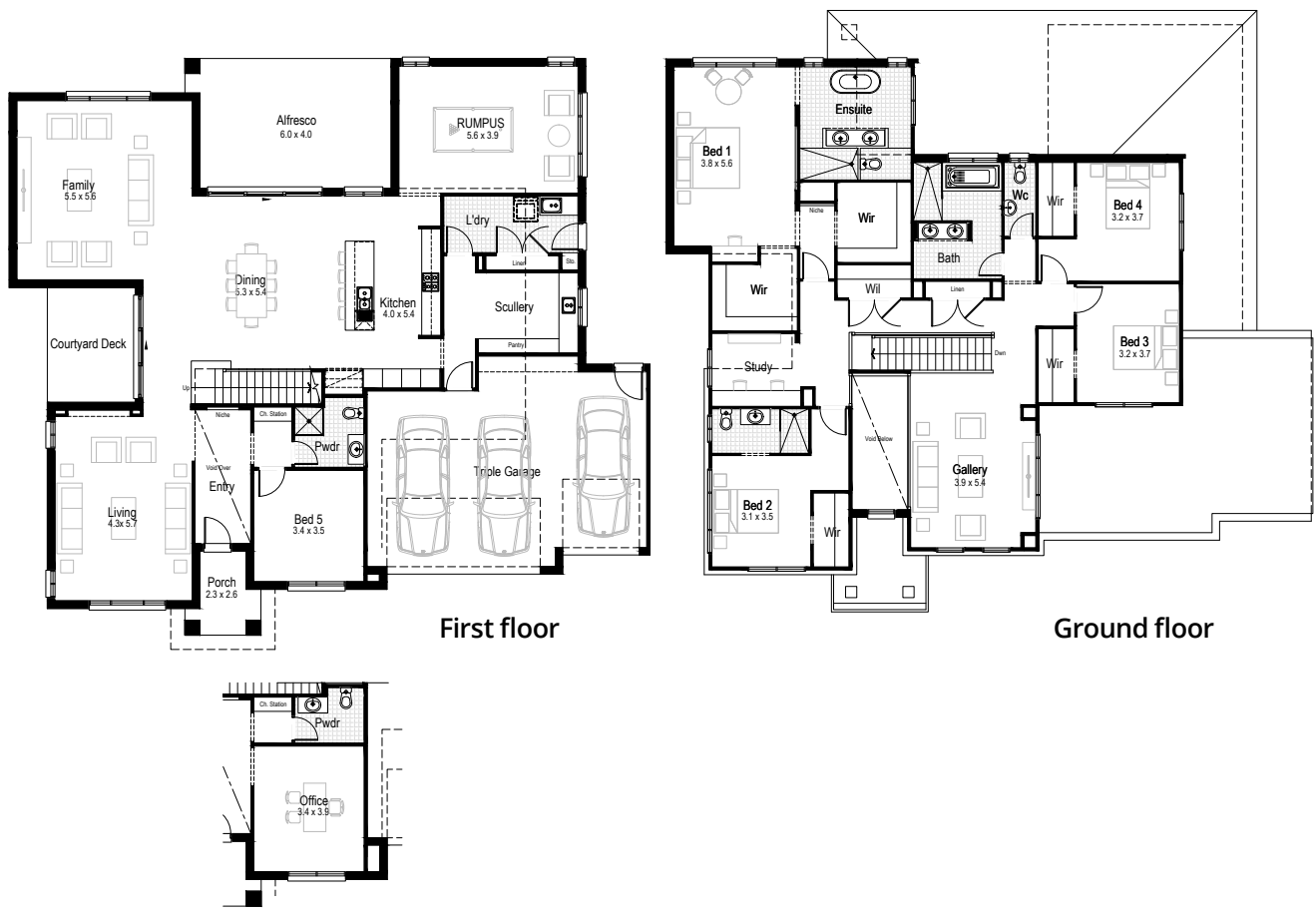
22.69 m

MINIMUM LOT WIDTH

STCC (Subject to Council Conditions)

# Rose 53

5 4 3



First floor

Ground floor

Option  
Office in lieu of bedroom 5



Ground floor  
living area  
204.64 m<sup>2</sup>



First floor  
living area  
192.86 m<sup>2</sup>



Garage  
55.57 m<sup>2</sup>



Alfresco  
24.90 m<sup>2</sup>



Porch  
4.89 m<sup>2</sup>



Overall width  
20.27 m



Overall length  
17.99 m



Total area  
492.82 m<sup>2</sup>

# COMPLETE YOUR DREAM HOME

SELECT AN INCLUSIONS PACKAGE  
TO SUIT YOUR STYLE AND BUDGET



## WE CALL THEM NECESSITIES. **NOT UPGRADES**

When our team created our range of inclusions packages, we decided to select items that you will need at every stage of your life. That's why our standard inclusions packages include:



**Air Conditioning**



**Automatic Garage Door**



**Tiled Outdoor Alfresco**



**Site Costs for Standard Lot\***



**Carpet and Tiles  
Throughout**



**Westinghouse Stainless  
Steel Appliances**



**Built-in Robes with  
Mirrored Sliding Doors**



**PLUS SO MUCH MORE**



**Pick up a brochure or visit [hudsonhomes.com.au](http://hudsonhomes.com.au)**

\*Site costs for a standard, cleared block with up to 1m fall across the building platform and up to M class slab



**hudsonhomes.com.au**  
1300 246 700

Let's be friends

