

# Crimson

**crim-son:** a strong, deep, vivid red colour produced from the scaled insect and sitting equally between red and rose.

The Crimson is an inspiring design that combines beauty with functionality. A truly superb family home that boasts multiple living zones to distinguish the individuality of each of its members.

## PERFECT FOR

-  Knock-Down, Rebuild
-  Big families
-  Entertainers
-  Growing families
-  Home theatre option
-  Home office option
-  Scullery included



# Facades



## Other compatible facades

Aspen  
Avoca  
Banksia  
Breeze  
Chateaux

Coastal  
Contemporary  
Eden  
Elite  
Hamptons

Harmony  
Hillsdale - 29 and 33 only  
Imperial - 29 and 33 only ★  
Majestic  
Merlot - 29 and 33 only ★

Nuvo - 29 and 33 only ★  
Pavilion  
Regal - 29 and 33 only ★  
Savoy  
Serenity

13.83 m

MINIMUM LOT WIDTH

STCC (Subject to Council Conditions)

# Crimson 24

4 2 2



Living area  
177.36 m<sup>23</sup>



Garage  
33.32 m<sup>2</sup>



Alfresco  
10.63 m<sup>2</sup>



Porch  
3.25 m<sup>2</sup>



Overall width  
11.99 m



Overall length  
20.51 m



Total area  
224.56 m<sup>2</sup>

14.67 m

MINIMUM LOT WIDTH

STCC (Subject to Council Conditions)

# Crimson 26

4 2.5 2



Living area  
196.35 m<sup>2</sup>



Garage  
33.35 m<sup>2</sup>



Alfresco  
11.61 m<sup>2</sup>



Porch  
3.73 m<sup>2</sup>



Overall width  
12.83 m



Overall length  
20.51 m



Total area  
245.04 m<sup>2</sup>

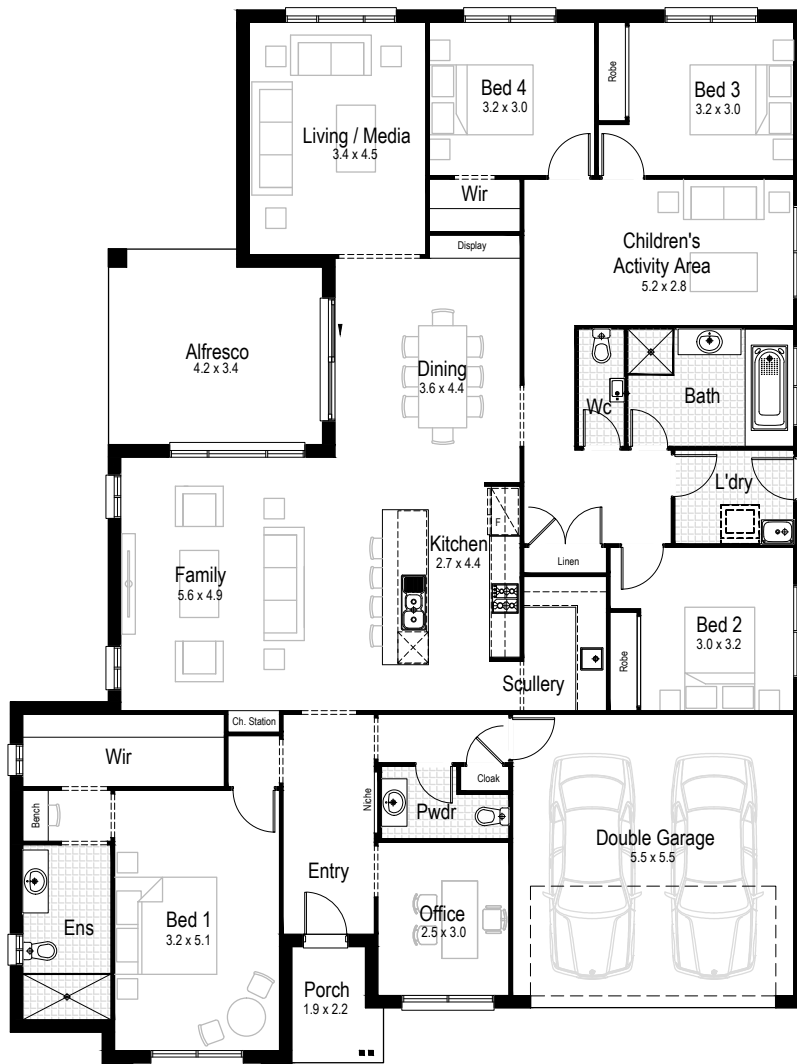
17.43 m

MINIMUM LOT WIDTH

STCC (Subject to Council Conditions)

# Crimson 29

4 2.5 2



Living area  
221.57 m<sup>2</sup>



Garage  
33.06 m<sup>2</sup>



Alfresco  
15.54 m<sup>2</sup>



Porch  
3.68 m<sup>2</sup>



Overall width  
15.59 m



Overall length  
20.75 m



Total area  
273.85 m<sup>2</sup>

17.43 m

MINIMUM LOT WIDTH

STCC (Subject to Council Conditions)

# Crimson 33

4 2.5 2



Living area  
240.54 m<sup>2</sup>



Garage  
33.06 m<sup>2</sup>



Alfresco  
24.73 m<sup>2</sup>



Porch  
4.12 m<sup>2</sup>



Overall width  
15.59 m



Overall length  
21.47 m



Total area  
302.45 m<sup>2</sup>

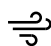







# COMPLETE YOUR DREAM HOME

SELECT AN INCLUSIONS PACKAGE  
TO SUIT YOUR STYLE AND BUDGET



## WE CALL THEM NECESSITIES. **NOT UPGRADES**

When our team created our range of inclusions packages, we decided to select items that you will need at every stage of your life. That's why our standard inclusions packages include:

- |   |  |
|---|--|
|  <b>Air Conditioning</b>                           |  <b>Automatic Garage Door</b>                   |
|  <b>Tiled Outdoor Alfresco</b>                     |  <b>Site Costs for Standard Lot*</b>            |
|  <b>Carpet and Tiles Throughout</b>                |  <b>Westinghouse Stainless Steel Appliances</b> |
|  <b>Built-in Robes with Mirrored Sliding Doors</b> |  <b>PLUS SO MUCH MORE</b>                       |

Pick up a brochure or visit [hudsonhomes.com.au](https://www.hudsonhomes.com.au)



\*Site costs for a standard, cleared block with up to 1m fall across the building platform and up to M class slab



**hudsonhomes.com.au**

1300 246 700

Let's be friends

