

# Rosewood

**rose-wood:** a popular reddish wood produced by certain tropical trees with a roselike odor, often used making high quality furniture and musical instruments.

The Rosewood is perfect for entertainers, specifically catered to upwards sloping blocks. With open plan living, an oversized kitchen and separate downstairs bedroom, this is the ideal home for hosting guests or extended families.

## PERFECT FOR

---

 Upwards sloping block

 Knock-Down, Rebuild

 Big families

 Entertainers

 Growing Families

 Scullery included





# Front Sloping **FACADES**





# *Front Sloping* **FACADES**





# *Front Sloping* **FACADES**





13.28 m

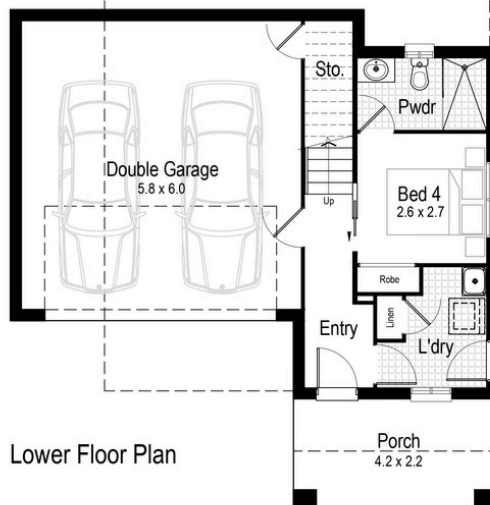
MINIMUM LOT WIDTH

STCC (Subject to Council Conditions)

# Rosewood 23



Upper Floor Plan - Alternative Kitchen Option



Lower Floor Plan



Upper Floor Plan



**Lower floor  
living area**  
31.04 m<sup>2</sup>



**Upper floor  
living area**  
115.53 m<sup>2</sup>



**Garage**  
38.91 m<sup>2</sup>



**Alfresco**  
13.87 m<sup>2</sup>



**Porch**  
9.49 m<sup>2</sup>



**Overall width**  
10.10 m



**Overall length**  
17.99 m



**Total area**  
212.95 m<sup>2</sup>



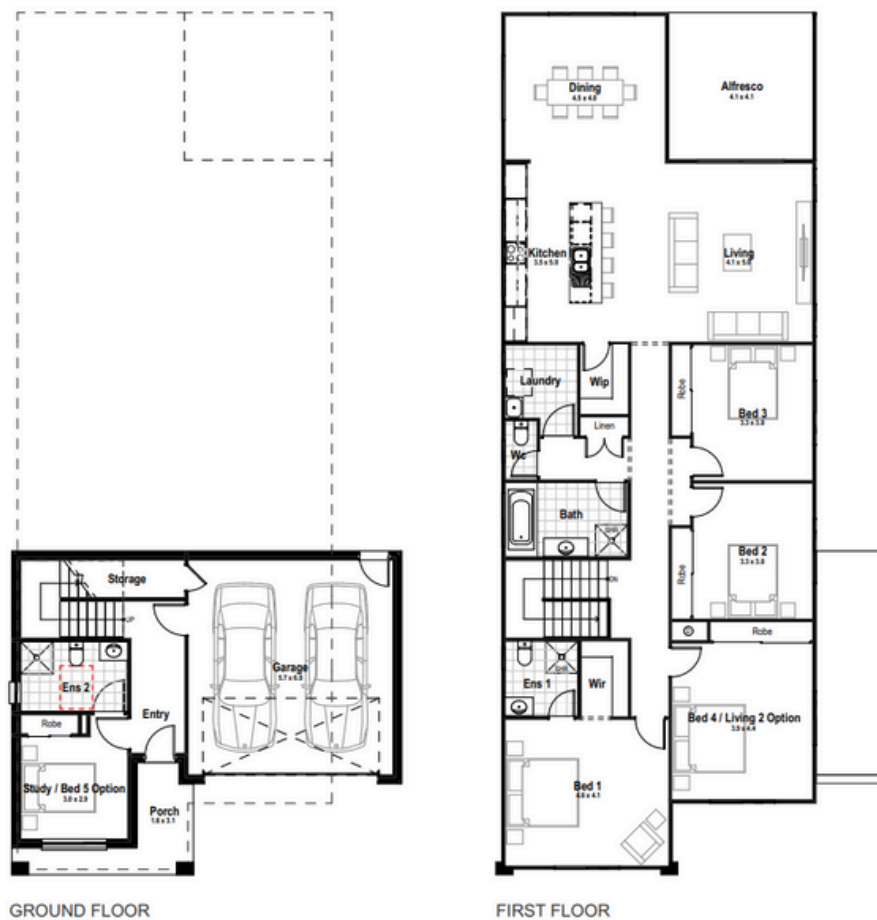
12.50 m

MINIMUM LOT WIDTH

STCC (Subject to Council Conditions)

# Rosewood 31

5 3 2



Lower floor  
living area  
37.29 m<sup>2</sup>



Upper floor  
living area  
185.18 m<sup>2</sup>



Garage  
38.83 m<sup>2</sup>



Alfresco  
16.80 m<sup>2</sup>



Porch  
7.33 m<sup>2</sup>



Overall width  
10.86 m



Overall length  
24.09 m



Total area  
285.52 m<sup>2</sup>



# COMPLETE YOUR DREAM HOME

SELECT AN INCLUSIONS PACKAGE  
TO SUIT YOUR STYLE AND BUDGET



## WE CALL THEM NECESSITIES. NOT UPGRADES

When our team created our range of inclusions packages, we decided to select items that you will need at every stage of your life. That's why our standard inclusions packages include:



**Air Conditioning**



**Automatic Garage Door**



**Tiled Outdoor Alfresco**



**Site Costs for Standard Lot\***



**Carpet and Tiles  
Throughout**



**Quality Stainless Steel  
Appliances**



**Built-in Robes with  
Mirrored Sliding Doors**



**PLUS SO MUCH MORE**



**Pick up a brochure or visit [hudsonhomes.com.au](http://hudsonhomes.com.au)**

\*Site costs for a standard, cleared block with up to 1m fall across the building platform and up to M class slab





**hudsonhomes.com.au**

1300 246 700

**Let's be friends**

