


# Amber

**am-ber:** a pure chroma colour located midway between yellow and orange on the colour wheel. Its name is derived from the yellowish-brown hard translucent fossil resin derived from extinct coniferous trees.

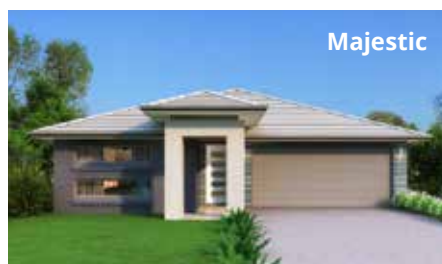
The Amber has been designed with the growing family in mind. At the heart of this attractive home is an inviting and spacious kitchen / family / meals domain where the family can come together to enjoy a meal and a casual conversation.

## PERFECT FOR

-  **First home buyers**
-  **Knock-Down, Rebuild**
-  **Entertainers**
-  **Growing families**
-  **Home theatre option**
-  **Home office option**
-  **Scullery included**



# Facades



## Other compatible facades

Aspen  
Banksia  
Breeze  
Chateaux – 26 and 30 only

Coastal  
Crest  
Elite

Sovereign – 26 and 30 only  
Statesman – 26 and 30 only

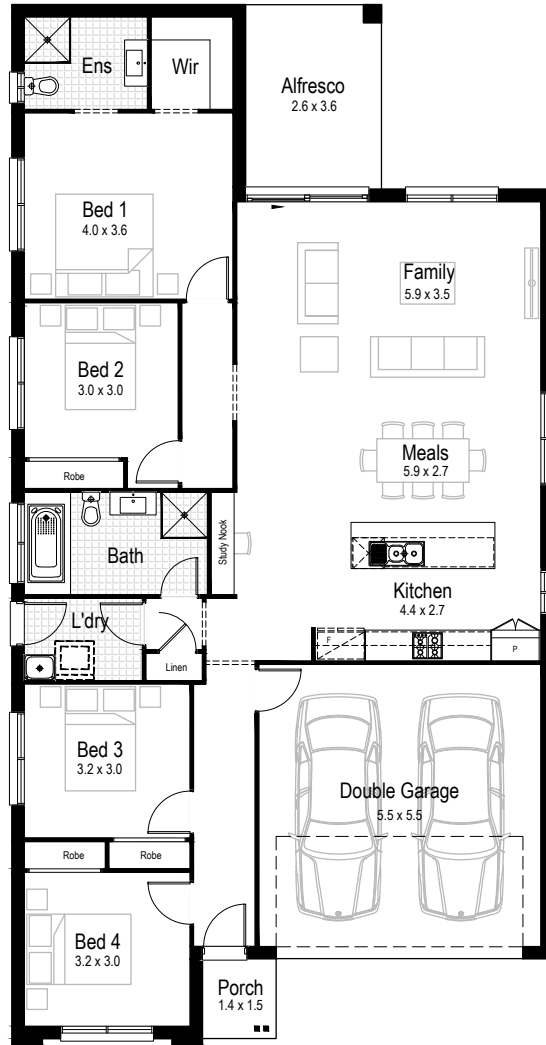
12.39 m

MINIMUM LOT WIDTH

STCC (Subject to Council Conditions)

# Amber 21

4 2 2



Living area  
147.56 m<sup>2</sup>



Garage  
32.89 m<sup>2</sup>



Alfresco  
9.54 m<sup>2</sup>



Porch  
2.25 m<sup>2</sup>



Overall width  
10.55 m



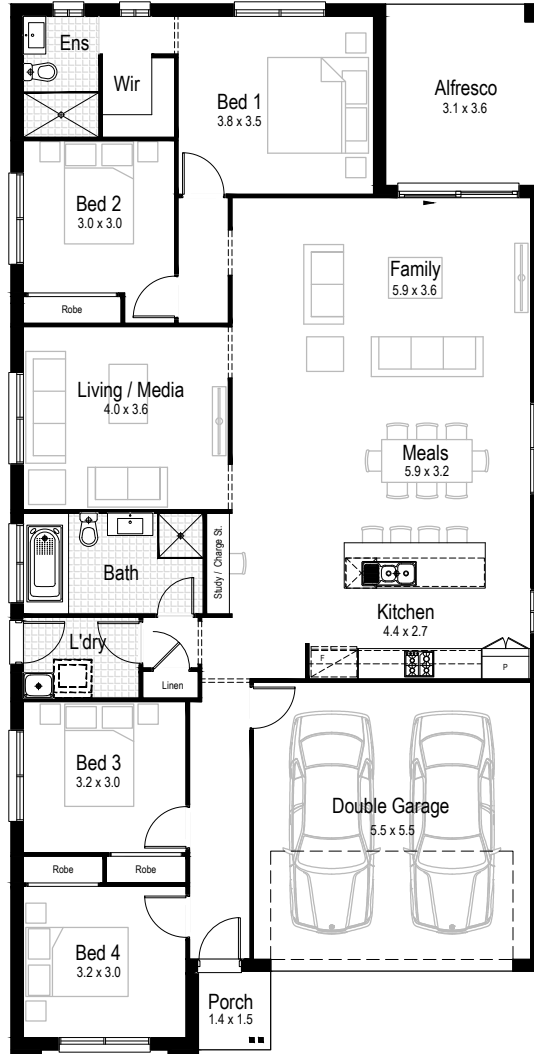
Overall length  
20.27 m




Total area  
192.24 m<sup>2</sup>

# Amber 23

4 2 2





  
Living area  
164.26 m<sup>2</sup>


  
Garage  
32.89 m<sup>2</sup>

  
Alfresco  
11.23 m<sup>2</sup>

  
Porch  
2.25 m<sup>2</sup>

  
Overall width  
10.55 m

  
Overall length  
20.87 m

  
Total area  
210.63 m<sup>2</sup>

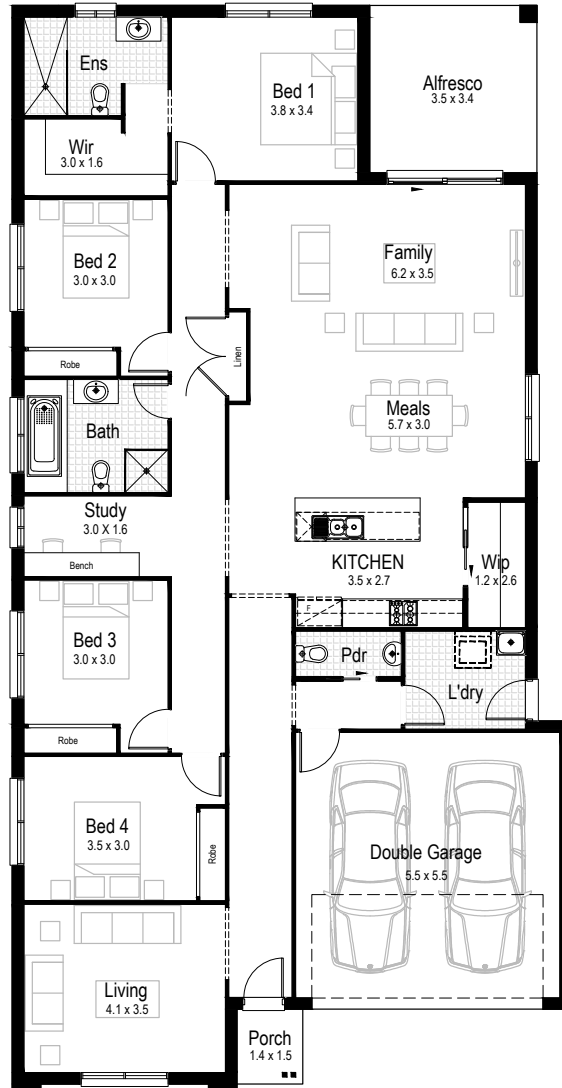
13.47 m

MINIMUM LOT WIDTH

STCC (Subject to Council Conditions)

# Amber 26

4 2.5 2



Living area  
194.14 m<sup>2</sup>



Garage  
33.17 m<sup>2</sup>



Alfresco  
12.11 m<sup>2</sup>



Porch  
2.14 m<sup>2</sup>



Overall width  
11.63 m



Overall length  
22.55 m



Total area  
241.56 m<sup>2</sup>

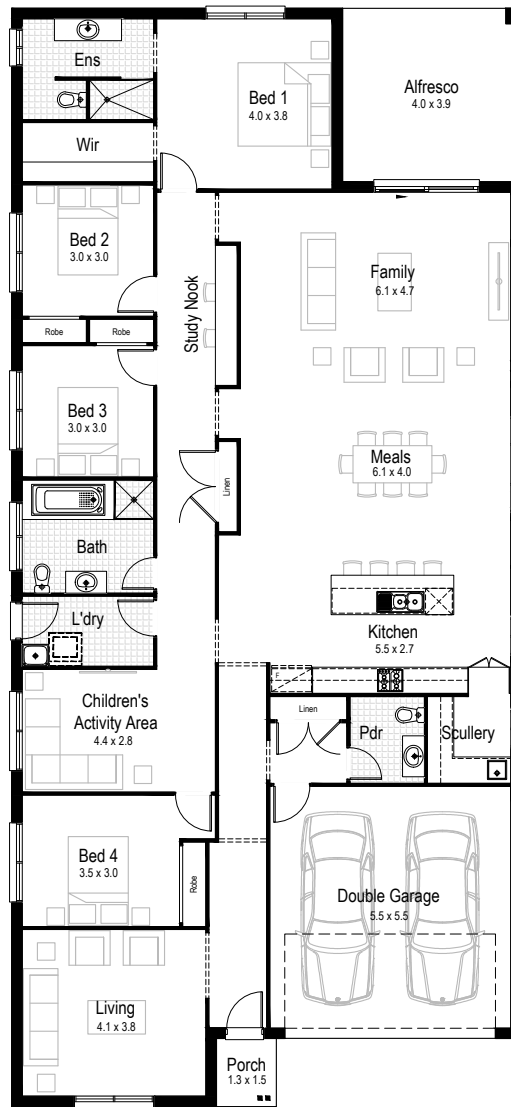
13.47 m

MINIMUM LOT WIDTH

STCC (Subject to Council Conditions)

# Amber 30

4 2.5 2



Living area  
231.68 m<sup>2</sup>



Garage  
33.00 m<sup>2</sup>



Alfresco  
16.16 m<sup>2</sup>



Porch  
2.14 m<sup>2</sup>



Overall width  
11.63 m



Overall length  
25.18 m



Total area  
282.98 m<sup>2</sup>

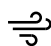







# COMPLETE YOUR DREAM HOME

SELECT AN INCLUSIONS PACKAGE  
TO SUIT YOUR STYLE AND BUDGET



## WE CALL THEM NECESSITIES. **NOT UPGRADES**

When our team created our range of inclusions packages, we decided to select items that you will need at every stage of your life. That's why our standard inclusions packages include:

- |   |  |
|---|--|
|  <b>Air Conditioning</b>                           |  <b>Automatic Garage Door</b>                   |
|  <b>Tiled Outdoor Alfresco</b>                     |  <b>Site Costs for Standard Lot*</b>            |
|  <b>Carpet and Tiles Throughout</b>                |  <b>Westinghouse Stainless Steel Appliances</b> |
|  <b>Built-in Robes with Mirrored Sliding Doors</b> |  <b>PLUS SO MUCH MORE</b>                       |

Pick up a brochure or visit [hudsonhomes.com.au](http://hudsonhomes.com.au)



\*Site costs for a standard, cleared block with up to 1m fall across the building platform and up to M class slab



**hudsonhomes.com.au**

1300 246 700

Let's be friends

