

# FIXED PRICE

## Home and Land Package



Marina Facade

### Crownlands

Lot 114, Proposed Road,  
Austral NSW 2179

Expected Rego Date: May 2024

# \$1,323,610

Land Size: 342.4m<sup>2</sup>

Land Price: \$740,000

**Orchid 25**

The Orchid is a double storey home designed with the urban land in mind. With its clean lines and harmonious design, this narrow home design incorporates multiple living areas and offers all the elements required for a comfortable family.

- 4
- 2.5
- 1
- 228.94m<sup>2</sup>



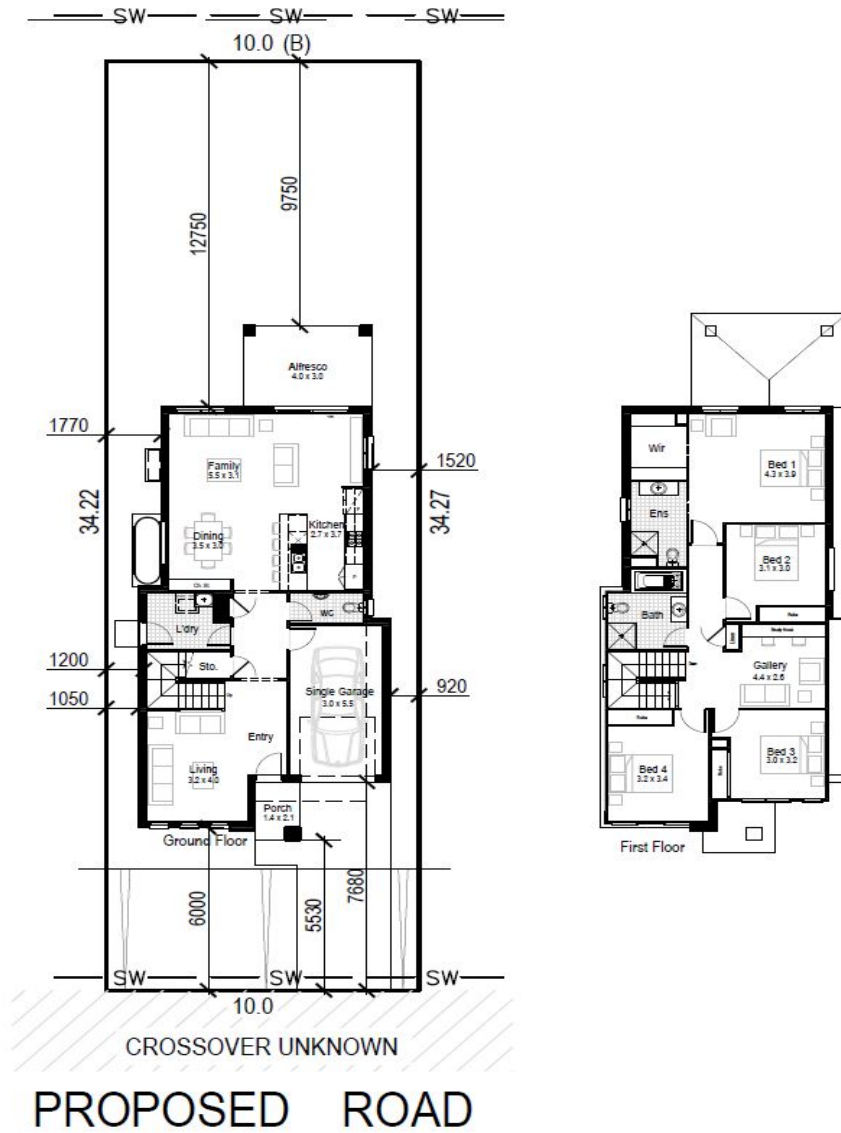
**H1: Smart Inclusions Package**  
Home + Land: Bonus Bundle  
See next page for details

Living Area	193.49m <sup>2</sup>	Porch	4.32m <sup>2</sup>
Garage	18.89m <sup>2</sup>		
Alfresco	12.24m <sup>2</sup>		



### Our Guarantees

At Hudson Homes we understand the importance of time and money. And since delivering upon our promised to you is at the heart of everything we do, every customer is offered a peace-of-mind and security with our fixed price guarantee and our time frame guarantee.



**H1 H1: Smart Inclusions Package** + **H+L Home + Land: Bonus Bundle**

- House facade as nominated
- Split System A/C
- Site costs and BASIX
- Full lined kitchen cabinetry with overhead cupboards and bulkhead
- Westinghouse stainless steel cooktop and oven
- Westinghouse recirculating pull-out rangehood
- Contemporary floating style bathroom vanity units
- Ceramic tiles to all bathrooms and laundry
- Tiling to entry, family, kitchen and meals areas
- Carpet to all other internal areas
- Taubmans Endure paint system to ceilings and walls
- Automatic Colorbond garage door with 2 remotes
- Oyster style light fittings throughout
- Fully finished tiled outdoor alfresco
- Slimline water tank

- 20mm Stone benchtops to Kitchen
- 2590mm ceiling heights (Ground Floor Only)
- Night / Day ducted Air Conditioning
- Coloured concrete driveway
- Laminate Floors to Entry / Hall / Kitchen and Living areas
- Dishwasher
- Microwave
- Ducted Rangehood
- 900mm wide Appliances

**SPECTRUM DESIGN STUDIO** **COMPLIMENTARY SESSION**  
Includes a free personal consultation with a professional interior designer

**BONUS BUNDLE** **EXCLUSIVELY WITH THIS PACKAGE**  
Luxury items bundled together for even more great value

No Other Bonus Packages Applicable to H&L Packages

Photographs and other images used may show fixtures, fittings or finishes which are not supplied by Hudson Homes, or which are only available in some designs, or when selected as additional upgrades at an additional cost. Please speak to a Hudson Homes New Home Consultant who is able to provide a Tender that specifically outlines the features, finishes and fixtures that you will receive. Facade is for illustration purposes only. Home and Land prices applicable at 26/04/2022