

Lime

lime: A vibrant and electrifying shade that mirrors the zestful hue of fresh limes. This eye-catching colour falls between yellow and green, radiating a sense of energy and invigoration.

The Lime is the epitome of efficient living. Making the most of a narrow block, this smart double-storey design effortlessly suits the growing family with plenty of bedrooms and bathrooms all while boasting plenty of room for entertaining. From the outdoor alfresco to a personal living area upstairs, this home has been purposely designed for multi-zone living and ensuring there is enough room for everyone.

PERFECT FOR

-  Big families
-  Growing families
-  Home office
-  First home buyers



Facades



Chateaux



Classic



Contemporary



Madison



PREMIUM

Meridian



Marina



Novare



PREMIUM

Sierra



PREMIUM

Vista

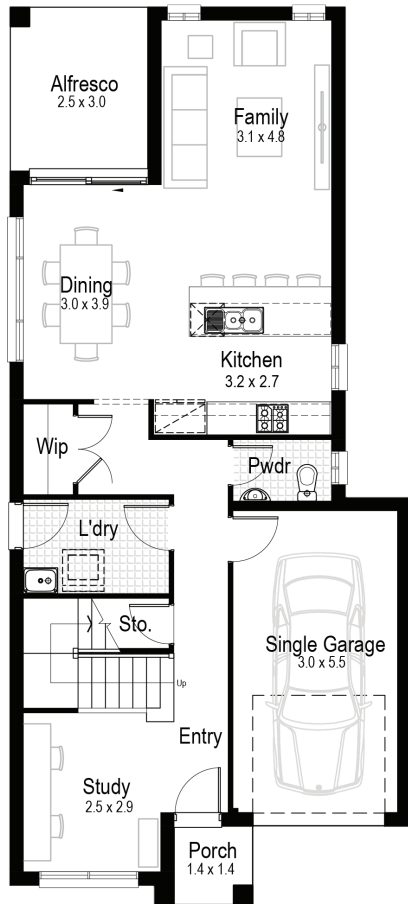
8.99 m

MINIMUM LOT WIDTH

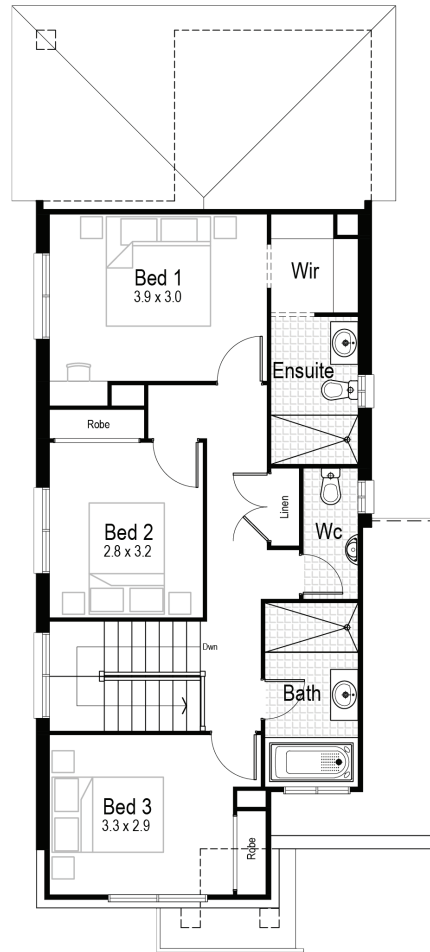
STCC (Subject to Council Conditions)

Lime 19

3 2.5 1



Ground Floor



First Floor



Ground floor living area
75.40m²



First floor living area
73.52 m²



Garage
18.91 m²



Alfresco
7.56 m²



Porch
2.07 m²



Overall width
7.31 m



Overall length
16.39 m



Total area
176.46 m²

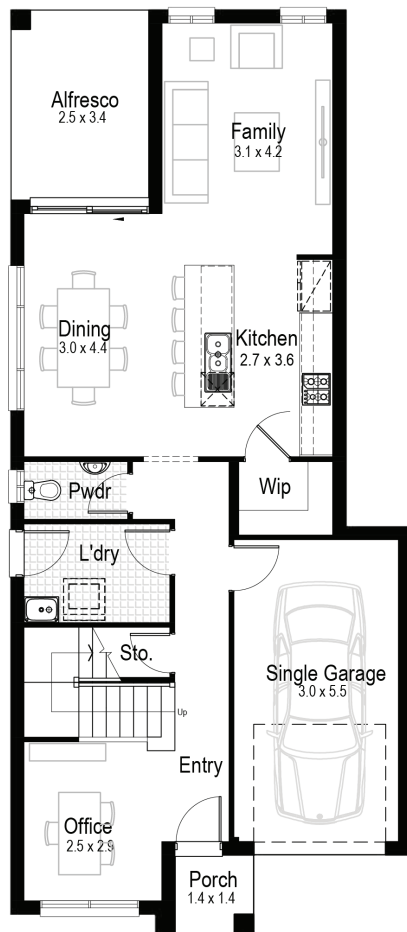
8.99 m

MINIMUM LOT WIDTH

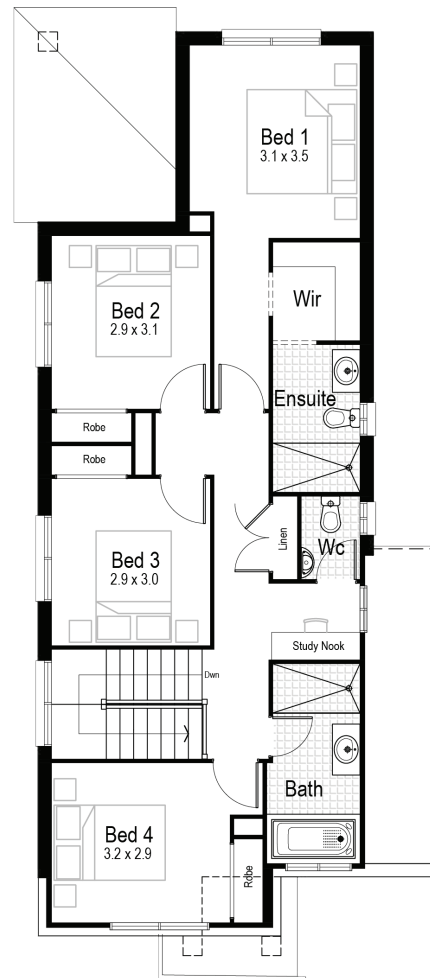
STCC (Subject to Council Conditions)

Lime 21

4 2.5 1



Ground Floor



First Floor



Ground floor living area
77.13 m²



First floor living area
88.21 m²



Garage
18.91 m²



Alfresco
8.76 m²



Porch
2.07 m²



Overall width
7.31 m



Overall length
16.87 m



Total area
195.08 m²

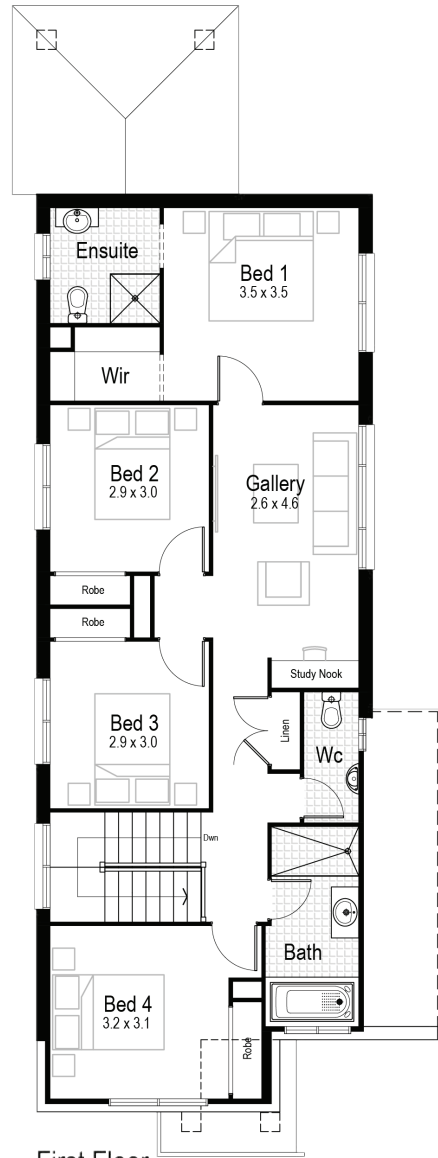
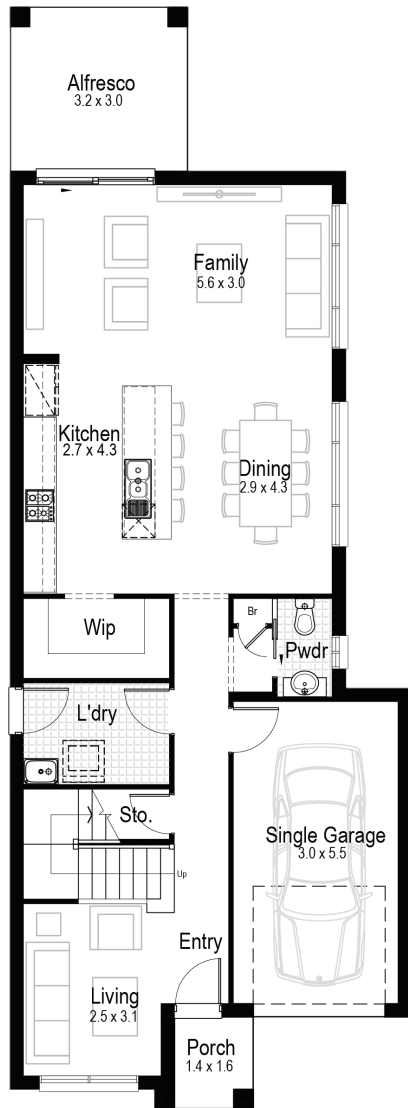
8.99 m

MINIMUM LOT WIDTH

STCC (Subject to Council Conditions)

Lime 23

4 2.5 1



Ground floor living area
86.62 m²



First floor living area
97.97 m²



Garage
18.91 m²



Alfresco
9.69 m²



Porch
2.41 m²



Overall width
7.31 m



Overall length
20.11 m



Total area
215.60 m²

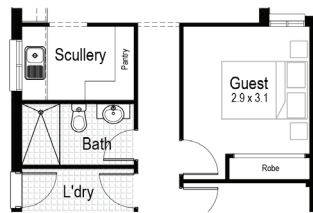
8.99 m

MINIMUM LOT WIDTH

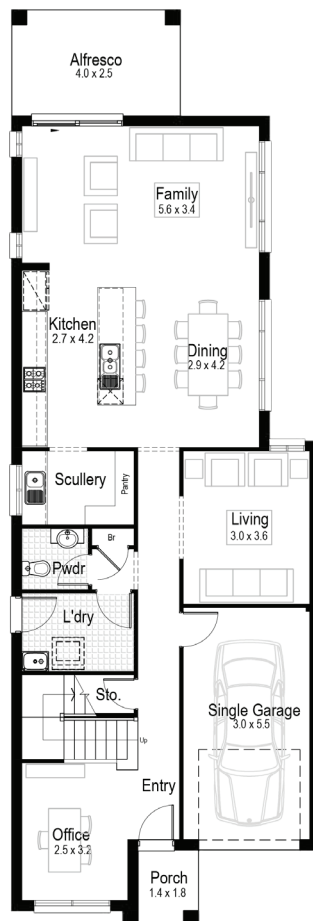
STCC (Subject to Council Conditions)

Lime 25

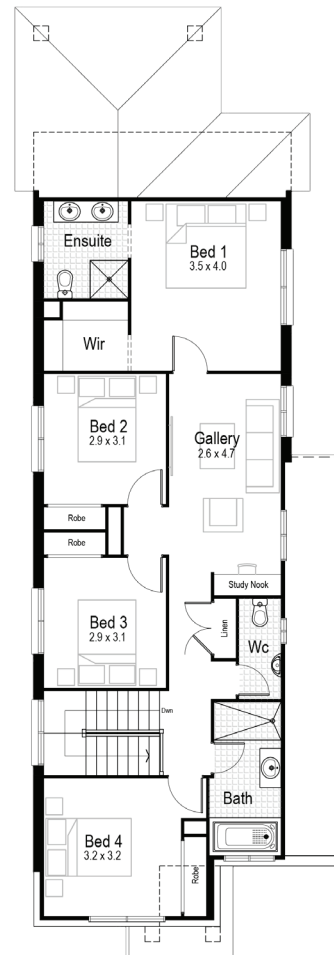
4 2.5 1



(Optional) Guest Room



Ground Floor



First Floor



Ground floor living area
103.95 m²



First floor living area
100.71 m²



Garage
18.63 m²



Alfresco
10.00 m²



Porch
2.59 m²



Overall width
7.31 m



Overall length
21.63 m



Total area
234.87 m²

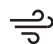







COMPLETE YOUR DREAM HOME

SELECT AN INCLUSIONS PACKAGE
TO SUIT YOUR STYLE AND BUDGET



WE CALL THEM NECESSITIES. **NOT UPGRADES**

When our team created our range of inclusions packages, we decided to select items that you will need at every stage of your life. That's why our standard inclusions packages include:

- | | |
|--|--|
|  Air Conditioning |  Automatic Garage Door |
|  Tiled Outdoor Alfresco |  Site Costs for Standard Lot* |
|  Carpet and Tiles Throughout |  Quality Stainless Steel Appliances |
|  Built-in Robes with Mirrored Sliding Doors |  PLUS SO MUCH MORE |

Pick up a brochure or visit hudsonhomes.com.au

*Site costs for a standard, cleared block with up to 1m fall across the building platform and up to M class slab



hudsonhomes.com.au

1300 246 700

Let's be friends

