

Welcome to our Display Homes



Experience the Hudson Homes difference

We at Hudson Homes have set a goal to become Australia's best home building business, and this starts by *having the happiest customers*.

We understand that building houses is not a quick, simple or easy job and we want to ensure that every customer who chooses to build with Hudson feels safe with us knowing that their end product is exactly what they were promised.



VIRTUAL TOURS

Experience our Virtual Display Village through our 3D and video virtual tours.



OVER 200 FLOORPLANS

Discover our full range online and find a design as unique as your family.



FREE PERSONALISED QUOTE

Talk to your new home consultant for your own quote.

2024 Queensland Builder of The Year



Awarded by
Housing Industry Association



On Display

AT BROOKHAVEN ESTATE




HOME DESIGN
AZURE 25

FACADE
HAMPTONS FACADE

INCLUSIONS

H2 DESIGNER INCLUSIONS

 4  2  3  2



Introducing **AZURE 25**

Hamptons Facade



4



2



2



3

MINIMUM LOT WIDTH

12.62 m

Subject to Council Conditions

THE AZURE IS PERFECT FOR:



Knock-Down, Rebuild



Growing Families



Home Theatre option



Home Office option



First Home Buyers



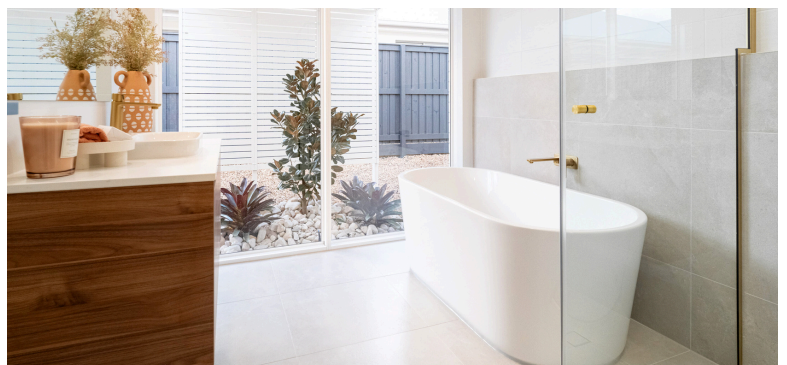
Downsizers

Scan for more info:





az-ure: a variation of blue that is often described as the colour of the unclouded sky on a clear summer's day.



The Azure is ideal for the family that enjoys bringing people together. With its large open plan living and entertaining areas, its vast kitchen with big island bench and an outdoor alfresco area all combine to bring a breath of fresh air to a lovely family home.

19

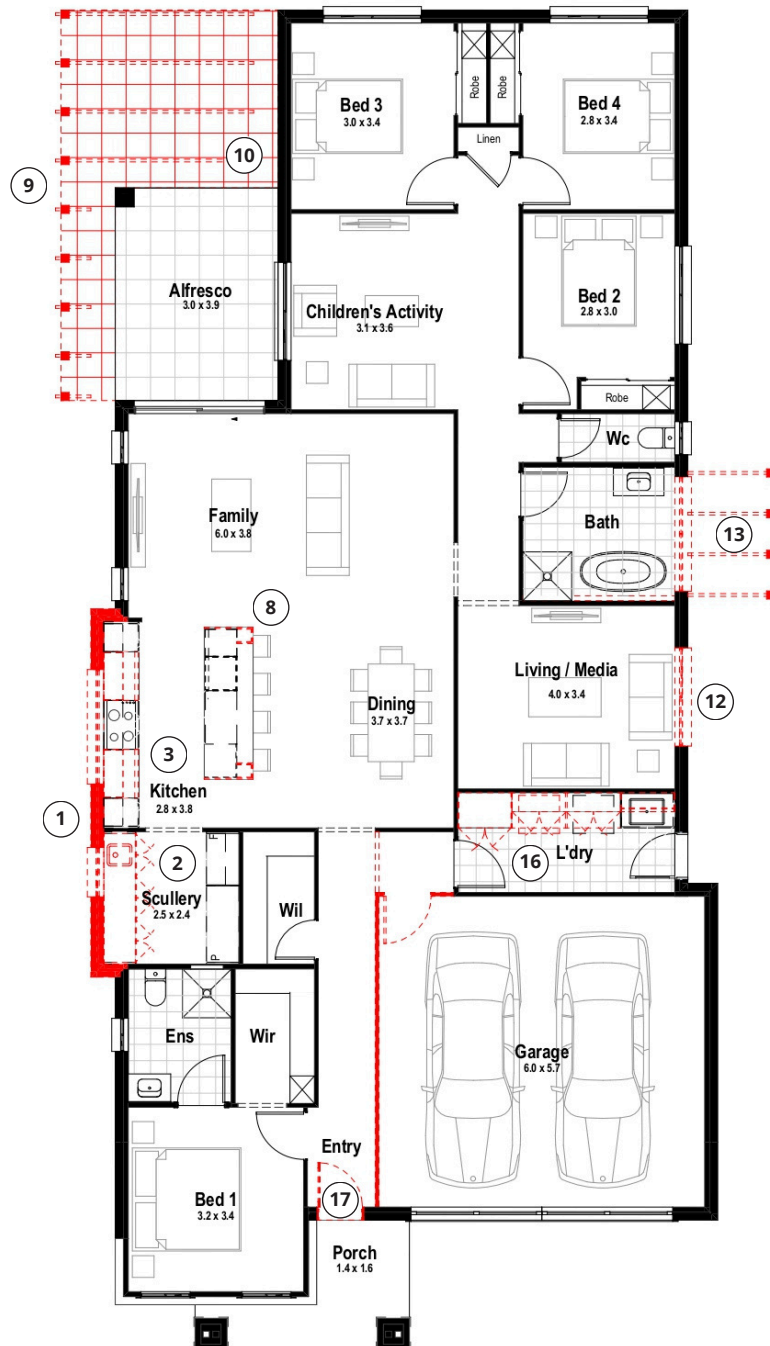
21

23

25

Azure 25

ON DISPLAY AT BAHRS SCRUB, QLD



Living Area
187.54 m²



Garage
37.38 m²



Alfresco
11.76 m²



Porch
5.99 m²



Overall Width
12.10 m



Overall Length
24.71 m



Total Area
242.67 m²

Optional upgrades on display

SHOWN IN **RED** ON FLOORPLAN

- ① Increase ground floor area by allowing under eaves extension to Kitchen & Scullery 3.73 m²
- ② Scullery including additional floor cabinetry, stone benchtop, tiled splashback, sink, tapware, plastered bulkheads & 1200 x 900 sliding window
- ③ Lithostone Calacatta Gold stone splashback and benchtops to Scullery, Kitchen & Island Bench
- 4 Brushed Brass Caroma Urbane II Single Bowl Sink & Liano II Sink Mixer to Scullery
- 5 Sharknose door handles to Scullery, Kitchen, Ensuite, Bathroom vanity & Laundry base cabinetry
- 6 Two (2) banks of 3 pot drawers to Kitchen
- 7 Brushed Brass Caroma Urbane II Double Sink & Liano II Sink Mixer to Kitchen
- ⑧ 20mm Stone Waterfall ends & Stone box ends to Island Bench
- ⑨ Extension to Alfresco slab (includes external floor tiles)
- ⑩ Painted VJ Timber ceiling to Alfresco
- 11 WIR Modifications:
 - Polytec coloured melamine shelving
 - One (1) Polytec coloured Drawer Unit (610mm wide, 3 drawers & 2 adjustable shelves)
- ⑫ 2100mm High x 1800mm Wide SF Powder coated sliding window to Living/Media room
- ⑬ Bathroom Modifications:
 - Brushed Brass Luna Wall Bath Mixer w/ 210mm Spout & B/Plate
 - 2800 long tiled ledge with Brass Trims
 - 2100mm High x 2100mm Wide Powder coated fixed window
- 14 Ensuite Modifications:
 - Brushed Brass Toilet Roll Holder
 - Brushed Brass aluminium trim to shower niche
 - Brushed Brass Dura Arco RA BV Mini Stop CW NRC 15mm to toilet suite
- 15 Additional Ensuite & Bathroom Modifications:
 - Stone top upgrade to vanity
 - Brushed Brass Caroma Luna Basin Mixer, Multifunction Rail Shower, Bath/Shower Wall Mixer & Double Towel Rail 630mm
 - 40mm - Mizu Drift Universal 40mm Pop Up Plug & Brushed Brass waste to basin
 - Polished edge mirror
 - Brushed Brass aluminium trim to shower screen
 - Full height tiling
 - Brass trimmed smart tile wastes
 - Wet area tiling
- ⑬ Laundry Modifications:
 - Stone benchtop
 - Laminated broom cabinetry
 - Laminated wall cabinetry with open shelf section & Plaster Bulkheads
 - Extension of stone benchtop creating Two (2) spaces for Drier & Washing machine
 - Wet area tiling
- ⑬ Humes 2040mm High x 820mm Wide Haven with clear glazing paint grade Entry Door
- 18 Satin Chrome Westminster Touch Plus Leverset
- 19 Austral Bricks - Hamptons (Colour Whitehaven)
- 20 Carpet Call - Beach Isle Range (Colour Bermuda) to Living, Bed 1, 2, 3, 4, Robes & Living/Media
- 21 Upgrade of internal & external Main floor tiles
- 22 Additional downlights throughout



Designer inclusions
package on display



PLUS
OPTIONAL
UPGRADES

26 Reasons to Build with Us

EXPLORE
OUR
OTHER
REASONS



#1 TRUST

Trust is exactly what you're looking for in a home builder right now and with something as important as building your new home, I believe that TRUST is the number one reason for you to build your new home with us.

When I first started building homes for families, my old-fashioned hands-on approach earned me the respect and trust of my peers. And my continued dedication and commitment to the home building industry later saw me earn CEO Magazine's prestigious Building and Construction Executive of the Year award as well as being named Australian Builder of the Year.

My secret was to only employ and work with the best people I could find, and this philosophy is carried right through the culture at Hudson Homes today.

As CEO of Hudson Homes, I am personally responsible for ensuring that we make the process of building your new home a delightful and rewarding experience. I remain dedicated to developing our people, strengthening our capabilities and building trusting relationships with our customers, our suppliers and our tradespeople in the hope that we exceed your expectations at every step along your home building journey.

Place your trust in me and my team and I'll do everything I can to ensure that building your new home is a delightful and rewarding experience. And, if for any reason, we have let you down anywhere along the way, I invite you to write to me personally at danny@hudsonhomes.com.au or to call me directly on 0411 181 007 and I'll make it right for you.

That is my promise and commitment to you.

Danny H.
Assabgy CEO





Inclusions to satisfy every taste and budget

Necessities,
Not
Upgrades

**Scan to see our
inclusions:**



LOOKING FOR SOMETHING DIFFERENT?

Let's create your dream home

Choose from 200+ floorplans to find the perfect fit for your family's lifestyle. **Ask your New Home Consultant about personalising one of our designs for your new home.**



Discover Our Virtual Display Village



Put yourself in the driver's seat and take a virtual tour through to any of our display homes **Australia-wide**.

It's as if you're actually there!

SCAN TO SEE VIRTUAL HOMES





hudsonhomes.com.au

Let's be friends



Our FIXED PRICE Guarantee only applies to readily accessible land where our complete site due diligence may be conducted (excludes unregistered land and knock-down, rebuild contracts). Please note that where specific engineering reports are required to complete site due diligence (such as Geotechnical, Hydraulic, Acoustic, Flood and Bushfire requirements) which, in some instances, may only be obtained after the signing of your HIA Building Agreement, the final fixed price amount will be guaranteed AFTER receipt of such engineering reports and design but ALWAYS fixed prior to the commencement of construction. For knock-down, rebuild contracts, Hudson Homes Time Frame Guarantee only applies after the soil testing (Bore Hole Report), contour survey and demolition / removal of site material has been completed and relevant authority approvals have been received. Hudson Homes agrees to complete construction of your new home on time as specified in your signed HIA Building Contract and the conditions therein. Hudson Homes Quality Build Guarantee only applies to new tenders requested after 10/04/2025.

Hudson Homes may amend these specifications and inclusions at any time without notice and reserves the right to supply alternative items of equal quality. Images are indicative only. Photographs and other images used may show fixtures, fittings or finishes which are not supplied by Hudson Homes, or which are only available in some designs, or when selected as additional upgrades at an additional cost. Standard included site costs are for a cleared residential site up to 450m², with up to 1 metre fall across the building platform, M class slab classification and with all services available at site boundaries (excludes battle-axe and rural sites). No allowance has been made for additional requirements or covenants that may be applicable to individual lots or housing estates. BASIX requirements will be assessed on an individual site basis and additional costs may apply. Please speak to a Hudson Homes New Home Consultant who is able to provide a Tender that specifically outlines the features, finishes and fixtures that you will receive. Correct as at 10/04/2025.