

# HUDSON HOMES

## Home and Land Package



CLASSIC PLUS

### Kinma Valley

594 Proposed Road Morayfield QLD  
4506

Starting From

# \$984,800

Land Size: 734.0 m<sup>2</sup> Land Price: \$494,500

 4  3  2  224.24 m<sup>2</sup>

## MAUVE 24

The Mauve provides everything you could want in a family-oriented double storey design, catered for blocks sloping upwards. This home has it all, featuring open-plan dining / living, a dedicated study, separate guest bedroom, a generous outdoor alfresco and much more.

H1



### H1: Smart Inclusions Package

Super Savers Included

See next page for details

House Length	14.27m
Garage	10.91m
Living Area	174.31
Garage	33.46
Alfresco	13.83
Porch	2.64

### Our Guarantees

At Hudson Homes we understand the importance of time and money. And since delivering upon our promise to you is at the heart of everything we do, every customer is offered peace-of-mind and security with our **quality build guarantee** and our **time frame guarantee**.



01-12-2025

**ENQUIRE NOW**

JESSE JENKINS

0431292123

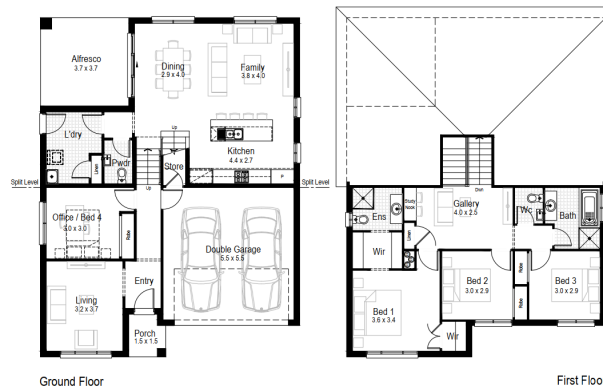
jesse.jenkins@hudsonhomes.com.au



**SPECTRUM**  
DESIGN STUDIO

**COMPLIMENTARY  
CONSULTATION**

Includes a free personal  
home consultation with  
a professional designer



**H1 H1: Smart Inclusions Package**

- House facade as nominated
- Split System A/C
- Site costs and BASIX requirements
- Full lined kitchen cabinetry with overhead cupboards and bulkhead
- Laminate bench tops with rolled edge finish
- QUALITY appliances - stainless steel oven and cooktop, recirculating
- Slide-out rangehood & dishwasher
- Contemporary floating style bathroom vanity and mirror, tiled
- Splashback & 1675mm acrylic bathtub
- Sliding doors to built-in wardrobes
- Ceramic tiles to bathrooms, laundry, entry, family, kitchen and meal areas
- Carpet to all other internal areas
- 2440mm ceiling heights
- for single storey
- 2590mm ceiling heights for double storey (Ground floor only)
- Paint system to ceilings and walls
- Automatic garage door with 2 remotes
- Oyster style light fittings throughout
- Fully finished tiled outdoor alfresco
- Slimline water tank

**INCLUDING**

**SUPER SAVINGS**  
SAVING UP TO **\$47,000 OFF** YOUR HOME

**OMG!!**

HOME SIZE	DISCOUNT
UP TO 42SQ	<b>\$30,000</b>
43SQ TO 52SQ	<b>\$35,000</b>

**SAVE!**

**ENQUIRE NOW**

**JESSE JENKINS**

**0431292123**

**jesse.jenkins@hudsonhomes.com.au**

Terms and conditions apply. Images are indicative only. Floor plans based on Classic facade and will adjust for alternatives. Standard included site costs are for a cleared residential site up to 450m<sup>2</sup>, with up to 1 metre fall across the building platform, M class slab and with all services available at site boundaries (excludes battle-axe and rural sites). Home and Land packages are subject to developer design and statutory authorities' approval. Additional allowances may be required for an individual lots or housing estates. Package pricing does not include stamp duty, legal fees or other costs that may be incurred with the purchase of land. Photographs and other images used within marketing material may show fixtures, fittings or finishes which are not supplied by Hudson Homes, or which are only available in some designs or when selected as additional upgrades. Please speak to a Hudson Homes New Home Consultant who is able to provide a building contract that specifically outlines the fixtures, finishes and features that you will receive, and selections from the builder's standard range. Hudson Homes agrees to complete construction of the home on time as specified in the signed HIA agreement (subject to any inclement weather, holiday period closure or other permissible time extensions that are beyond our control). Hudson Homes reserves the right to alter any advertised price without notice. Other promotional offers by Hudson Homes are not applicable unless specified. All plans and images are copyright of Hudson Homes Pty Ltd ABN 92 623 431 685, Builders Lic: 15078318