

# HUDSON HOMES

## Bayside Package



BREEZE FACADE

### Bayside House and Land

Lot 2/37-39 Schmidt Street Victoria Point Schmidt Street  
Victoria Point QLD 4165

Starting From

# \$1,274,000

Land Size 400.0 m<sup>2</sup> Land Price \$770,000

4
 2.5
 2
 222.48 m<sup>2</sup>

H2

#### H2: Designer Inclusions

See next page for details

House Length 16.55 M

House Width 8.27 M

## CAROLINA 24

The Carolina is an easy living home design that brings a sense of peace and serenity to any family. This is a home that never leaves you wanting more ... with its vast living and entertaining spaces and generous floorplan, every member of the family is sure to feel right at home. With the added option of adding a theatre room and design options that can support up to six bedrooms, this home is perfect for the growing or generational family.



14-04-2026

### Our Guarantees

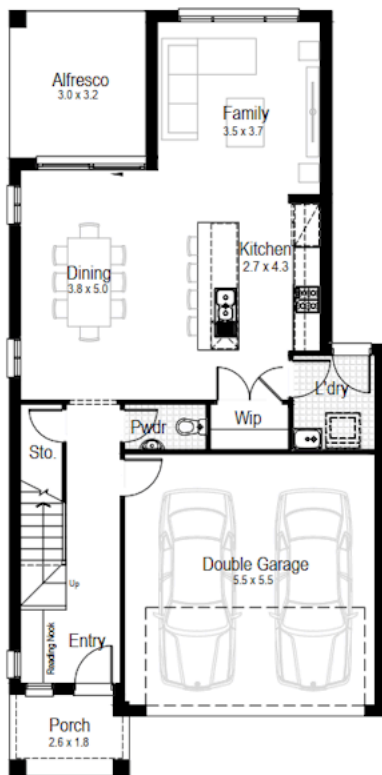
At Hudson Homes we understand the importance of time and money. And since delivering upon our promise to you is at the heart of everything we do, every customer is offered peace-of-mind and security with our **quality build guarantee** and our **time frame guarantee**.

ENQUIRE NOW

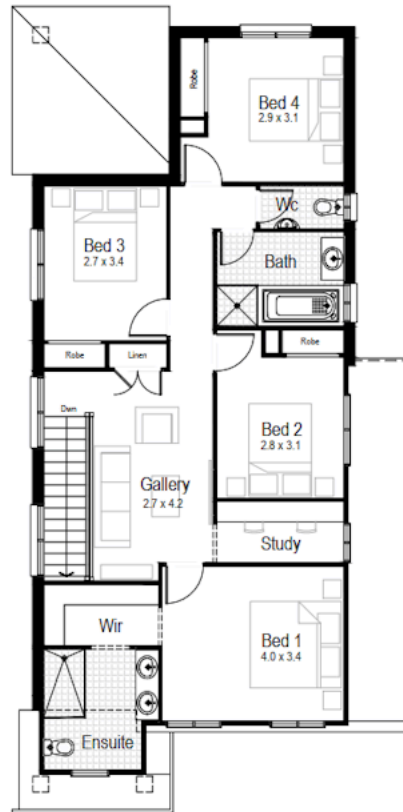
ROSE VITAGLIANO

0402365844

rose.trimbounas@hudsonhomes.com.au



Ground Floor



First Floor



**SPECTRUM**  
DESIGN STUDIO

**COMPLIMENTARY  
CONSULTATION**

Includes a free personal home consultation with a professional designer

**H2 H2: Designer Inclusions**

- Automatic garage door with 2 remotes
- Fully finished tiled outdoor alfresco
- Flyscreens to all opening windows and sliding doors
- House facade as nominated
- Site costs and BASIX requirements
- Colourbond steel roofing
- 2590mm ceiling heights throughout
- Fully lined kitchen cabinetry with overhead cupboards and bulkhead
- 20mm stone benchtops to kitchen, bathrooms and laundry
- QUALITY appliances - Stainless steel appliances including freestanding cooker, canopy rangehood, dishwasher and built-in microwave
- Ducted air conditioning system
- Contemporary floating style bathroom vanity units
- Ceramic tiles to all bathrooms and laundry
- Floor tiles to entry, family, kitchen and meals areas
- Carpet to all other areas
- Dulux paint system to ceilings and walls

**ENQUIRE NOW**

**ROSE VITAGLIANO**

0402365844

rose.trimbounas@hudsonhomes.com.au