

HUDSON HOMES

Home and Land Package



CAMBRIDGE FACADE

Watagan Park Estate - Cooranbong NSW

1364 Eagles Ridge Cooranbong NSW 2265

Starting From

\$1,162,388

Land Size 525.0 m² Land Price \$538,888

5 3.5 2 324.91 m²

H1 **H1: Smart Inclusions**
See next page for details

MARIGOLD 35

The Marigold creates an ideal space for luxury living. This home, which was inspired by its sister design, the Mocha, features multiple living areas and a large open plan kitchen, making it a popular design for entertainers. Space and light have been used very efficiently throughout, with a generous alfresco at the rear, connecting indoor and outdoor living.



11-05-2026

Our Guarantees

At Hudson Homes we understand the importance of time and money. And since delivering upon our promise to you is at the heart of everything we do, every customer is offered peace-of-mind and security with our **quality build guarantee** and our **time frame guarantee**.

ENQUIRE NOW

STEVE SLISAR

0483950830

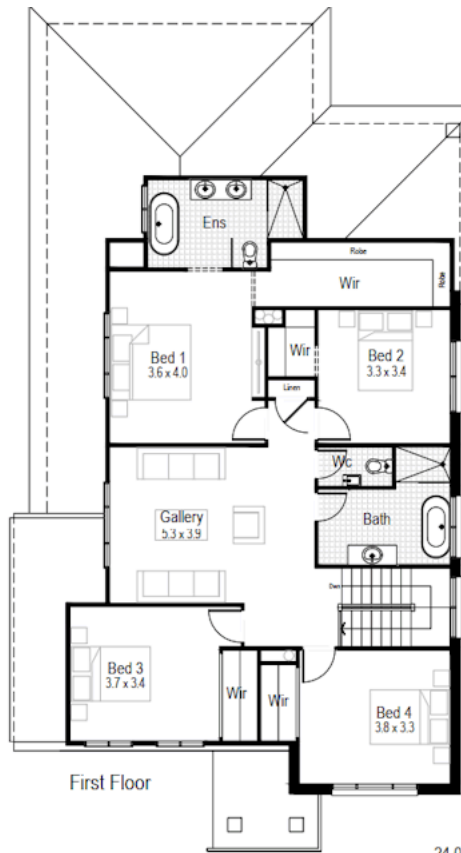
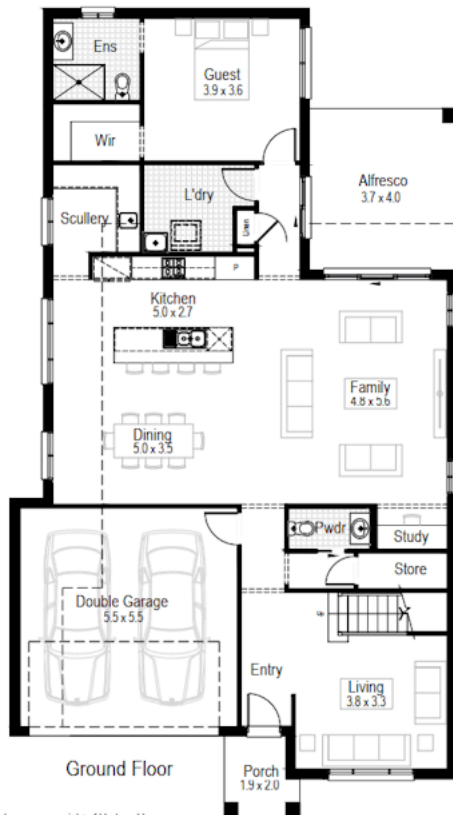
steve.slisar@hudsonhomes.com.au



SPECTRUM
DESIGN STUDIO

**COMPLIMENTARY
CONSULTATION**

Includes a free personal
home consultation with
a professional designer



24.05

These plans are copyright of Hudson Homes
or plans based on Classic facade and will adjust for alternatives

H1 H1: Smart Inclusions

- House facade as nominated
- Split System A/C
- Site costs and BASIX requirements
- Fully lined kitchen cabinetry with overhead cupboards and bulkhead
- Laminate bench tops with rolled edge finish
- QUALITY appliances - Stainless steel oven and cooktop, recirculating slide-out rangehood & dishwasher
- Contemporary floating style bathroom vanity and mirror, tiled splashback & 1675mm acrylic bathtub
- Sliding doors to built-in wardrobes
- Ceramic tiles to bathrooms, laundry, entry, family, kitchen and meal areas and carpet to all other internal areas
- 2440mm ceiling heights for single storey
- 2590mm ceiling heights for double storey (Ground floor only)
- Paint system to ceilings and walls
- Automatic garage door with 2 remotes
- Oyster style light fittings throughout
- Fully finished tiled outdoor alfresco
- Slimline water tank

ENQUIRE NOW

STEVE SLISAR

0483950830

steve.slisar@hudsonhomes.com.au